

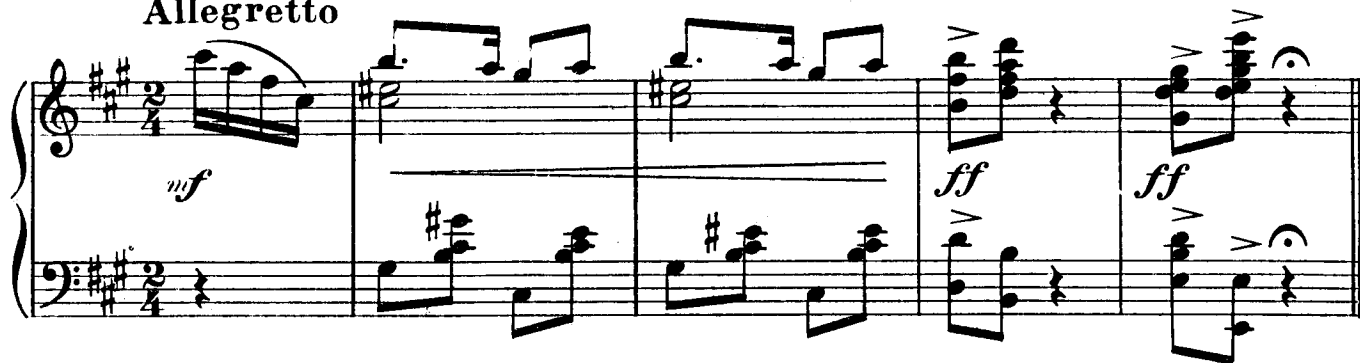
КАЛИНКА

Words by
P. G. KRUTCHIN

Music by
A. TCHERNIAWSKY

Allegretto

Piano



Musical score for the piano introduction, consisting of two staves (treble and bass clef) in 2/4 time. The key signature has two sharps (F# and C#). The piece begins with a *mf* dynamic and transitions to *ff* in the final two measures. The melody is primarily in the right hand, while the left hand provides a rhythmic accompaniment.



Musical score for the vocal line, consisting of a single treble clef staff. It contains the first four measures of the vocal melody, which is in 2/4 time and has a key signature of two sharps.

Ка - ли - нуш - ка, Куд - ря - ва - я,
1. Ка - lee - noosh - ka, Kood - ria - va - ya,
3. Na vie - notch - kee on dlia mee - loy



Musical score for the piano accompaniment, consisting of two staves (treble and bass clef). The right hand features chords and melodic fragments, while the left hand plays a steady eighth-note accompaniment. The dynamic markings include *mf* and *ff*.

cresc. poco a poco rit.



Musical score for the vocal line, consisting of a single treble clef staff. It contains the fifth and sixth measures of the vocal melody, including a fermata over the final note.

Пы - шно в'ро - шѣ — рас Цвѣ - ла.
Poe - shus v'ro - shtche ras tsvie - la.
O - bor - val ves viesh - niee tzyviet.

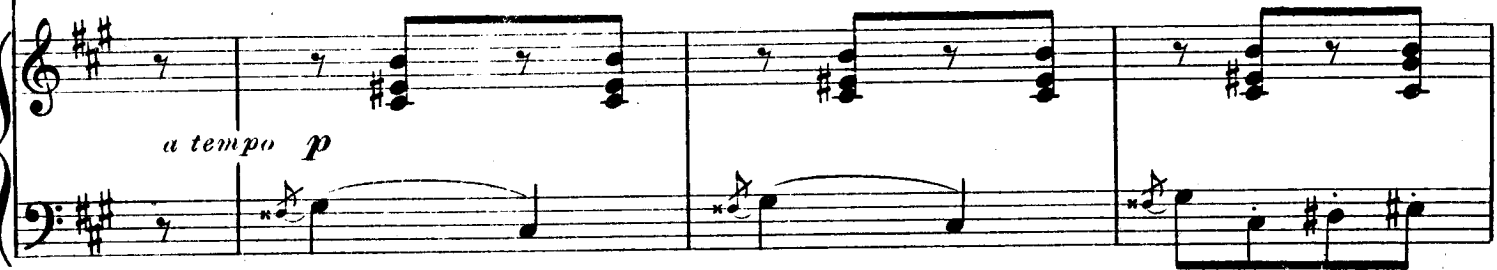


Musical score for the piano accompaniment, consisting of two staves (treble and bass clef). It continues the accompaniment from the previous section, ending with a fermata over the final notes. The dynamic marking *cresc. poco a poco rit.* is present.

р а tempo



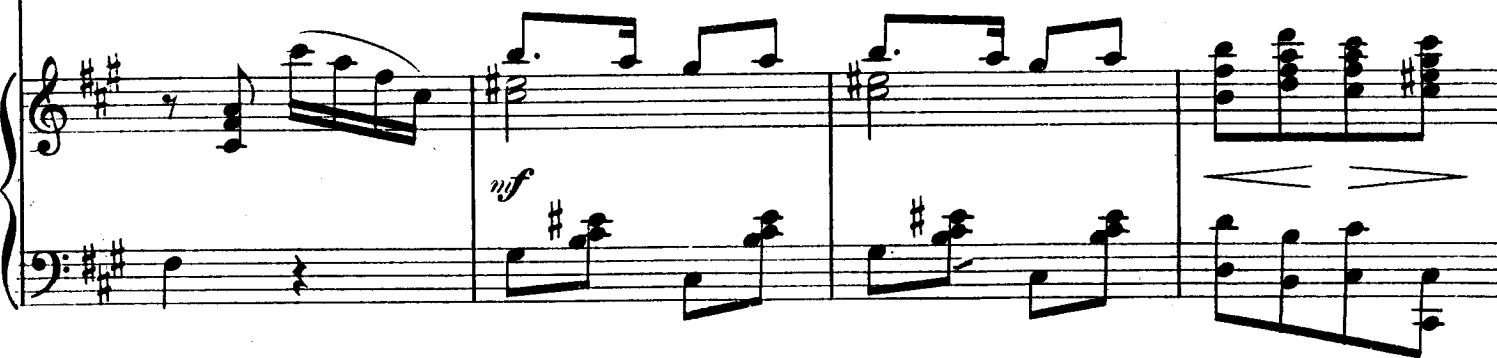
Ка - лин - ка, Ка - лин - ка, кра си - ва бы -
Ka - leen - ka, Ka - leen - ka, kra - see - va bee -



а tempo р



ла, В'ро-щѣ веш - не - ю по - ро - ю, Ка - лин - ка цвѣ -
la, V'ro shtche vesh - ne-yoo ро - ро - уоо, Ka - leen - ka tzvie -



ла, А. _____ 2. Раз - по - ва ди - лись в'ту -
la, Ah. _____ 2. Raz - ро - ва - dee - lees v'too
4. Nie peesh - na sto - it ka -



cresc. poco a poco rit.

ро - шу Па - рень сдѣ - ви - цей гу - лять.
ro - shtchoo Pa - ren s'die - vee - tzei goo - liat.
lee - na za - to die - vee - tza tzvie tet.

cresc. poco a poco rit.

p a tempo

Ка - лин - ка, Ка - лин - ка, Кра - си - ва бы
Ka - leen - ka, Ka - leen - ka, Kra - see - va bee

a tempo p

ла, В'ро шѣ веш - не - ю по ро - ю Ка -
la, V'ro - shtche vesh - nie - uoo ро - го - уоо Ка -

1.

2.

Лин - ка цвѣ ла А. _____
leen - ka tzvie la Ah. _____

ff